

Russell Timber Technology Data Sheet

Hardwood Insulated External Door Sets

Automated For Assistance - Auto Multi Locks AV2 & AV2E

Energy Efficient, Secure & Sustainable

Overview

Russell Timber Tech **Hardwood Insulated External** Town & Country Classic Range offer a warm and welcoming entrance to your home combined with high performance, security and energy efficiency.

The range represents quality manufactured hardwood entrance doors with a choice of designs for specific project needs. Our products are fully factory finished to ensure long term performance and appearance.

Our range of **Automated for Assistance** door sets are particularly suited to buildings with lower density occupation or where automated locks for locking and / or release are required for the frail, elderly or other circumstances.



This range includes a slam lock feature, and all single doors can be supplied as Automated for Assistance. A 12v motor and power supply unit together with 2m of transition cable and appropriate locks are supplied, usage dependent.

- All single door designs can be manufactured as inward or outward opening French or Double Doors including fully glazed products. They incorporate an alternative **High Security Fullex Gemini** locking system specifically developed for French or Double Doors.
- Many of the designs within the range can be manufactured as an **FD30 fire rated product** - useful in deck access locations. Contact our Technical Department for further details.
- The QTE 7 and QTE 8 ranges are also appropriate as **Access Control** doors for apartment properties using an Anti-thrust Night Latch with heavy duty electric latch, pull handle and push plate.
- Most single door designs can be used as **Common Entrance Doors** to multi-usage buildings for extra security. Supplied with deeper frame section it incorporates a substantial magnetic lock/locks plus a concealed Dorma ITS96 door closer, D handle, kick plates etc...
- Our windows and doors are tested to **Secured by Design**. To comply with SBD standards, a spy-hole is required if opaque glazing units are used in front door sets.
- The complete range uses timber from managed forests with **Full Chain of Custody**.
- Doors can be supplied with accompanying sidelights, fanlights and screens.

All products and production are subject to continuous development. The company reserves the right to amend details and sizes without notice

John A Russell (Joinery) Ltd

8 Dilwara Avenue, Glasgow, G14 0QS

Telephone: 0141 958 0444 | Fax: 0141 958 0333 | Website: www.russelltimbertech.co.uk

Company Registration: SC045289 | VAT No: 260 8552 57 | Data Sheet Ref: PDS 012-01 / 14.04.14

RUSSELL
Timber Technology
Engineered to excel

Russell Timber Technology Data Sheet

Hardwood Insulated External Door Sets Automated For Assistance - Auto Multi Locks AV2 & AV2E Energy Efficient, Secure & Sustainable

Specifications

- **U-Value to 1.1 W/m²K**
 - 58mm Hardwood insulated composite door with PIR insulation *
 - **UNIQUE** Insulated Mortise & Tenon jointed doors **
 - High Security AV2 or AV2E - 2 hooks and latch
 - Additions when using AV2E: 12v motor & power supply unit & Cable transition with 2m of cable
 - Kitemarked anti-bump Euro Profile Cylinder with 3 keys
 - 1½ pairs of Heavy Duty Hi-load Lift Off Hinges
 - Handle with integral escutcheon back plate
 - Standard Lever handles internally
 - Low level cill in or out open
 - Laminated/toughened clear or obscure double glazed units
 - Fully Factory Finished using Standard or RAL/BS colours
 - Hung in a 80 x 57mm Hardwood Laminated Frame manufactured from the solid. Incorporating:
 - a) a continuous Aquamac 21 weather gasket
 - b) adjustable metal security keeps
 - Sidelights & Fanlights can be included as part of an integral unit.
- * The PIR insulation achieves an A+ rating under the BRE Green Guide. It is manufactured without the use of CFC or HCFC. It has Zero Ozone Depletion Potential and a GWP of <5.
- ** The combination of insulation and mortise and tenon is unique to Russell Timber Technology. It is a traditional and strong method of jointing two pieces of timber together to withstand the ravages of life long usage.

Secured by Design



Police Preferred Specification



Product Codes

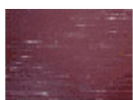
- **QTE 7 Town Classics - Panelled both sides: 7a (AV2)**
- **QTE 8 Country Classics - Lined and grooved externally: 8a (AV2E)**

Colours

The Town & Country Classics range can be supplied fully factory finished from a selection of stains and colours. The colours shown below are for illustration only. Please check RAL/BS numbers. Alternative RAL/BS colours can be supplied which, dependant on quantity, may attract an additional charge.



Light Oak
Stain



Mahogany
NCS 8010-Y90R



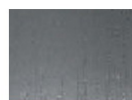
Midnight Blue
BS 20C40



Oxford Blue
BS 20D45



Pine Green
RAL 6028



Steel Grey
RAL 7011



Teak
Stain



White
NSC S0502Y



Wine Red
RAL 3003

Russell Timber Technology Data Sheet

Hardwood Insulated External Door Sets

Automated For Assistance - Auto Multi Locks AV2 & AV2E

Energy Efficient, Secure & Sustainable

Styles – QTE 7

Designs with multi-glazing units (7.10G, 7.16G, 7.17G, 7.18G, 7.20G, 7.22G) are quoted with bronze glazing bars within the glass except products finished in white, which will have white glazing bars. Timber astragals complete with back-to-back spacer are available on request at an additional cost.



Russell Timber Technology Data Sheet

Hardwood Insulated External Door Sets

Automated For Assistance - Auto Multi Locks AV2 & AV2E

Energy Efficient, Secure & Sustainable

Styles – QTE 8

Designs with multi-glazing units (8.7G, 8.8G, 8.9G, 8.15G) are quoted with bronze glazing bars within the glass except products finished in white, which will have white glazing bars within the glass. Timber astragals complete with back-to-back spacer are available on request at an additional cost.

