

Russell Timber Technology Data Sheet

Timber Composite Insulated External Door Sets Automated For Assistance - Auto Multi Locks AV2 & AV2E Energy Efficient, Secure & Sustainable

Overview

Russell Timber Technology Composite Insulated door sets (QTE 9 and QTE 10) offer the optimum in energy efficiency and security.

Traditional and contemporary designs are available, as plain, panelled or lined with various glazing options.

The QTE 9 range is plain or panelled externally, whilst the QTE 10 is supplied with a lined effect. Both ranges are plain internally.

Where doors are required for **Automated Assistance** (ie where automated locks for locking and / or release are required for the frail and elderly, for example, or other circumstances) all door designs can be offered. A 12v motor and power supply unit together with 2m of transition cable and appropriate locks are supplied, usage dependent.

Manufactured from certificated softwood timbers, bonded with aluminium reinforcing plates and high performance PIR insulation this forms a strong, stable, secure door with excellent thermal performance.



Secured by Design



Police Preferred Specification



Russell Timber Composite Insulated doors can be supplied with accompanying sidelights, fanlights and screens. Products can be amended to perform to specific requirements.

- All single door designs can be manufactured as inward or outward opening French or Double Doors, including fully glazed products. They incorporate an alternative **High Security Fullex Gemini** locking system specifically developed for French or Double Doors. Call us for the full specification.
- With U-value to 0.8W/m2K, these door sets comply with Level 6 **Code for Sustainable Homes**.
- Our windows and doors are tested to **Secured by Design**.
- All range use timber from managed forests with **Full Chain of Custody**.

All products and production are subject to continuous development. The company reserves the right to amend details and sizes without notice

Russell Timber Technology Data Sheet

Timber Composite Insulated External Door Sets Automated For Assistance - Auto Multi Locks AV2 & AV2E Energy Efficient, Secure & Sustainable

Specifications

- High energy efficiency - U-Value to 0.8 W/m²K
- 58mm Insulated Composite Door.
- Hung in a 80x57mm Hardwood Laminated Frame manufactured from the solid. Incorporating:
 - a) a continuous all round Aquamac 21 weather gasket
 - b) adjustable metal security keeps
- High Security AV2 or AV2E – 2 hooks & Latch
- Additions when using AV2E:
 - ◇ 12v motor & power supply unit
 - ◇ Cable Transition cable with 2m of cable
- Kitemarked anti-bump Euro Profile Cylinder with 3 keys
- 1½ pairs of Heavy Duty Hi-load Lift Off Hinges
- Handle with integral escutcheon back plate
- Low level cill in or out open
- Laminated/toughened glass or obscure double glazed units
- Fully Factory Finished using Standard or RAL/BS Colours

Secured by Design



Police Preferred Specification

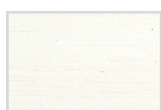


Product Codes

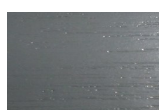
- QTE 9 - Automated For Assistance - AUTO MULTI LOCLS AV2 & AV2E: 9sa (single AV2)*
 - QTE 10 - Automated For Assistance - AUTO MULTI LOCLS AV2 & AV2E: 10sa (single AV2)*
- * Doors flush on internal face

Colours

Insulated External Door Sets are supplied fully factory finished from a selection of colours. Our standard colours shown here are for illustration only. Please check RAL/BS numbers. Other RAL/BS colours can be supplied, which dependant on quantity, may attract an additional charge.



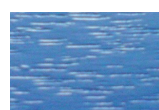
White



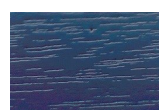
Steel Grey



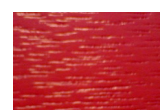
Pine Green



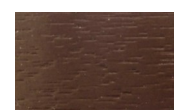
Oxford Blue



Midnight Blue



Wine Red



Mahogany

Russell Timber Technology Data Sheet

Timber Composite Insulated External Door Sets

Automated For Assistance - Auto Multi Locks AV2 & AV2E

Energy Efficient, Secure & Sustainable

Styles - QTE 9

Designs with multi-glazing units (9.16, 9.17, 9.18, 9.20, 9.22) are quoted with bronze glazing bars within the glass except products finished in white, which will have white glazing bars within the glass. Timber astragals complete with back-to-back spacer are available on request at an additional cost.



John A Russell (Joinery) Ltd

8 Dilwara Avenue, Glasgow, G14 0QS

Telephone: 0141 958 0444 | Fax: 0141 958 0333 | Website: www.russelltimbertech.co.uk

Company Registration: SC045289 | VAT No: 260 8552 57 | Data Sheet Ref: PDS 015-02 / 26.02.15

RUSSELL
Timber Technology
Engineered to excel

Russell Timber Technology Data Sheet

Timber Composite Insulated External Door Sets Automated For Assistance - Auto Multi Locks AV2 & AV2E Energy Efficient, Secure & Sustainable

Styles - QTE 10

Designs with multi-glazing units (10.4, 10.7, 10.8, 10.10, 10.12, 10.14 & 10.15) are quoted with bronze glazing bars within the glass except products finished in white, which will have white glazing bars within the glass. Timber astragals complete with back-to-back spacer are available on request at an additional cost.

