

Russell Timber Technology Data Sheet

Louvre Doors

Slatted & Ventilated

Overview

Russell Timber Technology **Louvre Doors** are ideal in areas where utilities, boiler rooms or waste require easy access and are protected.

Where additional security is necessary, these doors can be supplied with **three point locking systems** and suited key systems where appropriate.

This range can be finished to compliment other windows and doors within the building and all products are manufactured from timbers with certified **FSC Full Chain of Custody**.



Specification

- **58mm Hardwood Louvered Door**
- Hung in a 57 x 80mm Laminated Hardwood Frame manufactured from the solid. Incorporating:
 - ◇ A continuous all round Aquamac 21 weather gasket
 - ◇ Metal security keeps
- 1 ½ pairs Heavy Duty Hi-load Lift Off Hinges
- 5 Lever Mortice Lock
- Standard Handles:
 - ◇ Satin Anodised Aluminium (SAA)
 - ◇ Gold Anodised Aluminium (GAA)
 - ◇ Chrome Effect
- Low level cill, in or out open. Alternative options on request.



The mark of responsible forestry



Colours

Our product range can be supplied fully factory finished from a selection of stains and colours. The colours shown are for illustration only. Please check RAL/BS numbers. Other RAL/BS colours can be supplied, which dependant on quantity, may attract an additional charge.



Light Oak
Stain



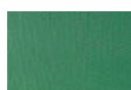
Mahogany
NCS 8010-Y90R



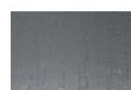
Midnight Blue
BS 20C40



Oxford Blue
BS 20D45



Pine Green
RAL 6028



Steel Grey
RAL 7011



Teak
Stain



White
NSC S0502Y



Wine Red
RAL 3003

All products and production are subject to continuous development. The company reserves the right to amend details and sizes without notice

John A Russell (Joinery) Ltd

8 Dilwara Avenue, Glasgow, G14 0QS

Telephone: 0141 958 0444 | Fax: 0141 958 0333 | Website: www.russelltimbertech.co.uk

Company Registration: SC045289 | VAT No: 260 8552 57 | Data Sheet Ref: PDS 026-01 / 14.04.14

RUSSELL
Timber Technology
Engineered to excel